

Public Voices Shaping Health Research: “the what, the how and the who”

7 June 2017 9.30am to 4pm

The Maltings, Riverside, Ely, Cambridgeshire

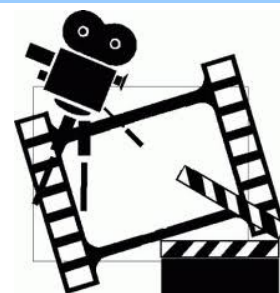
An invitation to the movies ...

MORNING: Watch and discuss ‘*People are Messy*’, a thought-provoking film exploring the **importance of the patient voice in shaping health research**

LUNCH: Meet new people and tour our **pop-up village of local organisations** to find out what’s happening in the region

AFTERNOON: Talks from **INVOLVE, Arthritis UK & Cancer Research UK**; Q&A with a **researcher & young people** about creative, collaborative approaches in **mental health research**

...& talking about how we can increase involvement in our community



This free event is for everyone - the public, patients, carers, charities, researchers & anyone else interested in finding out more & having a say.

To register your place, please see here:

<https://public-voices-shaping-health-research-oe.eventbrite.co.uk>

Calling organisations to join our pop-up village! You can book a stand on the link above or enquire by contacting Lorna Jacobs at CLAHRCoffice@cpft.nhs.uk

This event is being run by the NIHR East of England Public Involvement Collaborative, with support from the NIHR Clinical Research Network Coordinating Centre. Our collaborative is a partnership between NIHR organisations and the Academic Health Science Network (AHSN) in the Eastern region, who fund and/or support health research. We work with public and patient groups to improve research carried out in NHS and other care sectors. We want to encourage people to be involved and take part in health and social care research.



