

Leading Applied Health Research. Together.



National Institute for Health Research

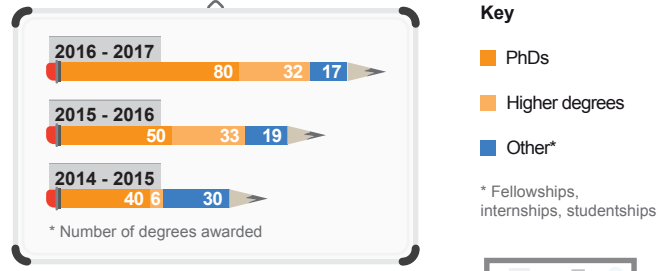
Collaborations for Leadership in Applied Health Research and Care (CLAHRCs) are leading the way in new, high quality applied health research, translating research into practice in health and social care.



9 CLAHRCs were first established by the National Institute for Health Research (NIHR).

After a successful 5-year pilot, 13 CLAHRCs were funded.

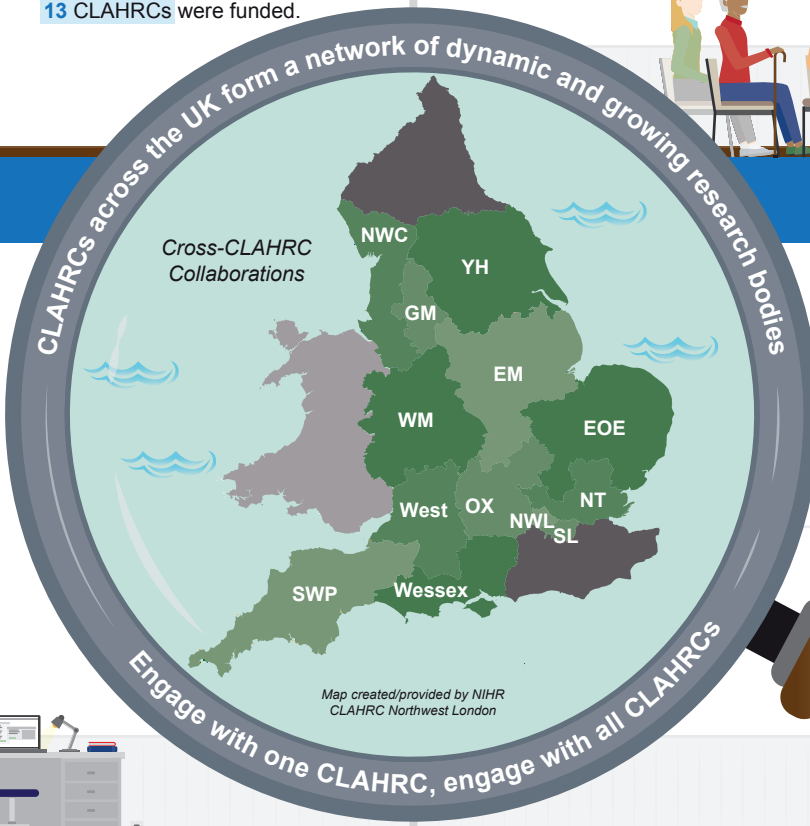
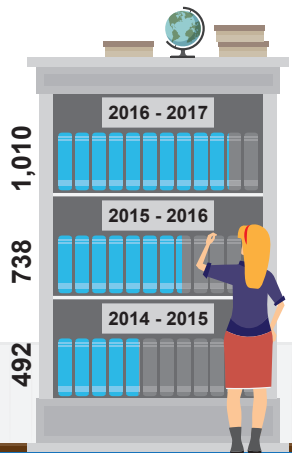
Training and Developing the CLAHRC Community



Publishing Research for Improved Health

Key: 1 book icon = 100 papers published

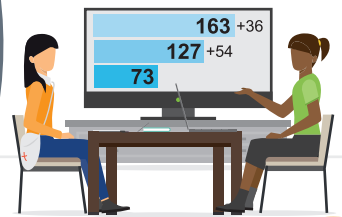
Each year NIHR CLAHRCs publish new research on health and social care



Building Partnerships with Industry

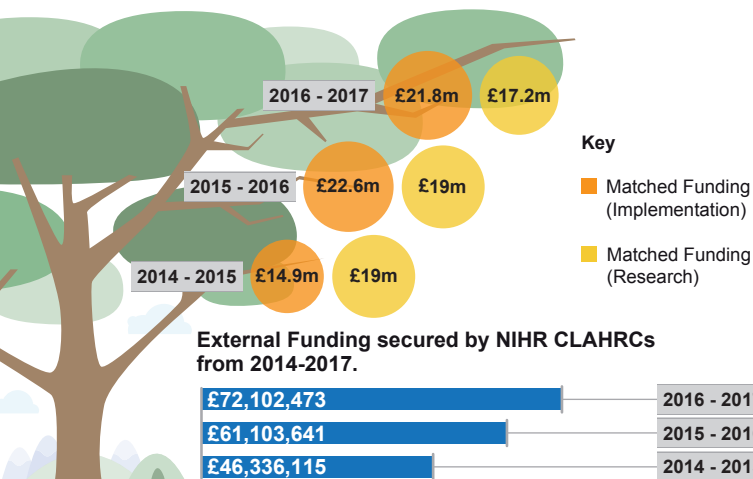
Each year NIHR CLAHRCs work with SMEs (Small to Medium-sized enterprises)

2014 - 2015: 73 | 2015 - 2016: 127 +54 | 2016 - 2017: 163 +36



NIHR CLAHRCs Funding Growth

NIHR CLAHRCs' total Matched Funding allocation for research and implementation from 2014-2017



Activities of Cross-CLAHRC Collaborations

Areas of Activity	Events	Initiative	Project	All
Crosscutting	5	7	11	23
Implementation Science	4	3	4	11
Patient Experience	1	-	5	6
Patient Safety	-	-	11	11
Policy, Workforce and Organisational Care	6	3	70	79
Total	16	13	101	130